

# CycleCounter®

## IoT sensor for usage and status data

### Specifications



The CycleCounter® is the world's first LoRaWAN™ based sensor for the transmission of status and usage data of the moving parts of a real estate.

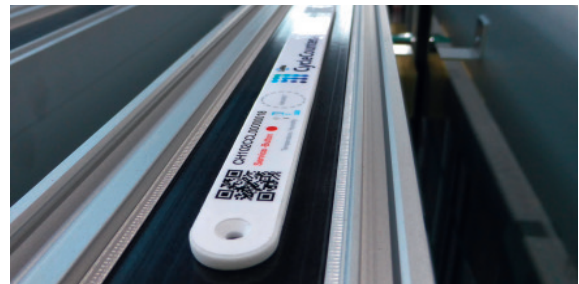
The information on use and handling as well as on alerts for exceeding threshold values provide precise information for a variety of users: Manufacturers of windows and doors, real estate owners or administrators, facility managers, maintenance professionals and for each and every user.

The CycleCounter® automatically measures, controls and administrates the complete usage process including information, fault reports and maintenance activities. If and insofar as maintenance is due or if a door, which should be closed, is open, the system will automatically transmit an alert regarding the status or the need for a service via a worldwide available IoT network. Using the cloud-based process automation, the management of doors and windows becomes very simple.

With the combined use of the electronic label for windows and doors QID-TAG™ you will have access to the complete documentation and dynamic usage data.

#### The specifications of the CycleCounter® sensor

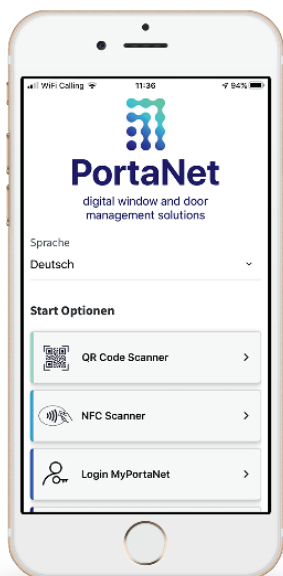
- Communication basis: LoRaWAN™ (proprietary and patented technology of Semtech Corporation)
- Frequency range for Europe: 868 MHz
- Class A Components: Lowest battery consumption; communication from the server to the sensor only takes place during two short reception windows, and after the data has been transmitted from the sensor to the server.
- Security and encryption: Robust security is a key element. LoRaWAN™ utilises AES 128-bit encryption and features two independent security layers, a network session key (NwkSKey) and an application session key (AppSKey).
- Wireless: battery operated, operating time up to 10 years and more
- Operating temperatures: -20 to +40°C, splash-proof



- Mass sensor: Length: 210 mm; Width: 15 mm; Height / Thickness: 3 mm
- Works with all materials, including steel
- The data can be visualised and adapted via the MyPortaNet application and Apps, or if the data is sent to your system via a REST API



The  
CycleCounter®  
is patent pending  
and protected as a  
trademark!



### The functions of the CycleCounter®

- Measures, monitors and transmits periodic usage information (number of cycles, open positions, location, slamming, condition)
- Service notification directly from the door during maintenance work
- Immediate alarm according to definable threshold values

- Notification «Left open»
- Notification «Closed again after being left open»
- Notification «Temperature high/low»
- Notification «Moisture too high»
- Notification «Tilt / Inclination longitudinal»
- Notification «Vibration»
- Notification «Number of Cycles reached»
- Notification «Battery low»

### Example settings

- after 30 minutes
- immediately
- 45 degrees ← 5 degrees
- exceeding 60%
- more than 1 degree
- exceeding 2.5 g
- after 20'000 cycles
- less than 10%

All notifications are always sent including date/time stamp  
... **stick on, activate, use!**

Test the new complete MyPortaNet solution for managing windows and doors!  
We gladly provide personal advice. We offer a demo version and would be happy to prepare a tailor-made offer.

**Further information regarding CycleCounter® and QID-TAG™ can be obtained from:**



**PortaNet AG**  
Seetalstrasse 185  
6032 Emmen  
Switzerland



+41 41 269 40 50



info@portanet.com



www.portanet.com

We digitise windows and doors.